



# Armorduct cable management

floor & perimeter systems



British  
manufacturing



# FLUSH FLOOR OUTLET TRUNKING



The Armorduct Flush Floor Service Outlet System has been designed for the distribution of and access to power, voice and data services in screeded floors, particularly where flexibility in the positioning of service outlets is required.

The Flush Floor Service Outlet System consists of three main elements;

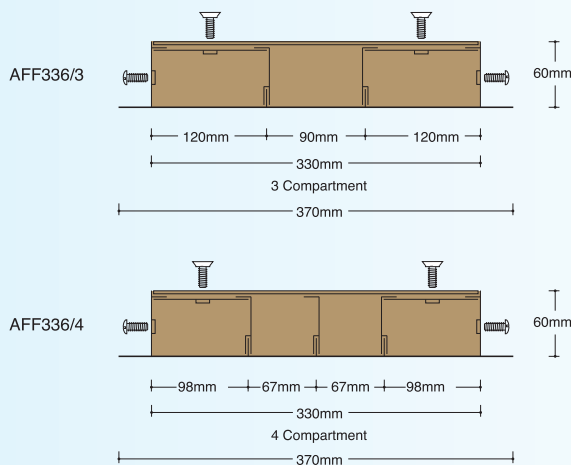
- A service compartment trunking together with a comprehensive range of accessories.
- A Flush Floor Outlet module which lies within the body of the trunking and can be located at any position along the length of the trunking run.
- A wide range of power, voice and data socket plates.

The Trunking and accessories are manufactured in self-coloured pre-galvanised steel.

The trunking is supplied in two metre lengths, with three or four compartments as standard.

Each trunking length has four separately fixed lids each 500mm long which when installed lie level with the surface of the surrounding screed. A comprehensive range of junctions, riser bends and sealing ends are available for use with the trunking.

## FLUSH FLOOR OUTLET TRUNKING PROFILES



### Specification

Self colour pre-galvanised steel sheet to:

BS EN10142:1991

Fe PO2G Z275NAC

BS EN10143:1993

Body and divider 1.2mm, Lid 2.5mm.

### Other Sizes of Trunking

The standard size range only is shown. Although the width of the centre compartments must remain, as shown, the width of the outer compartments may be increased to allow for extra data capacity. The height may also be increased to suit specific applications.

**A technical specification is available in PDF format on request.**

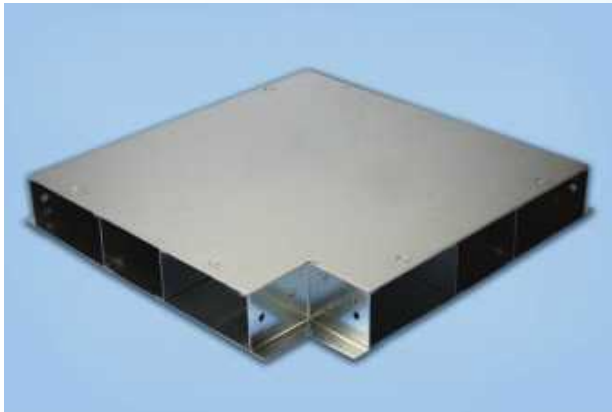
# FLUSH FLOOR OUTLET TRUNKING

## TRUNKING



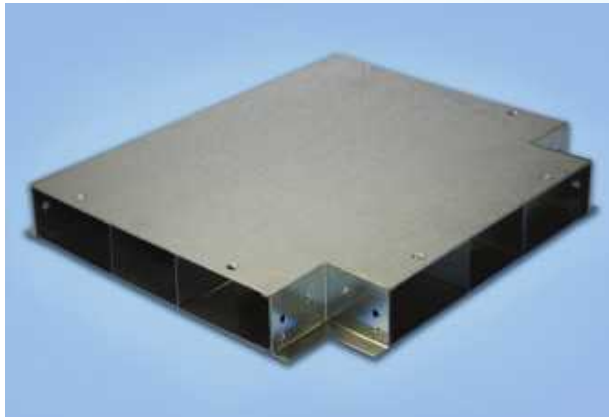
	No. of Compartments	
	3	4
PRODUCT CODE	AFF336/3	AFF336/4

## HORIZONTAL BEND



	No. of Compartments	
	3	4
PRODUCT CODE	AFFB336/3	AFFB336/4

## HORIZONTAL TEE (with flyover)



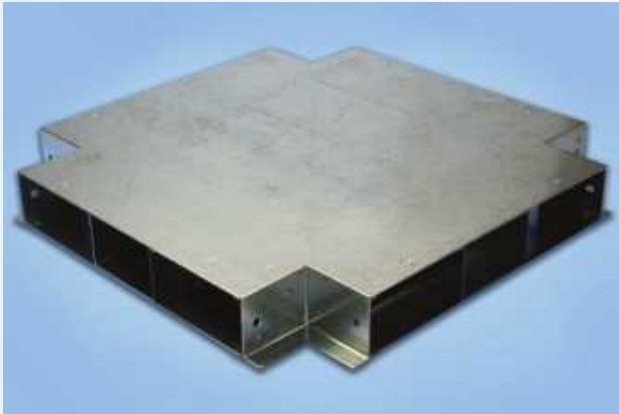
	No. of Compartments	
	3	4
PRODUCT CODE	AFFT336/3	AFFT336/4

### **ATTENTION INSTALLATION WARNING**

The trunking must be laid and fixed directly onto a fully supporting sub-screed. Failure to follow this instruction may lead to movement of the trunking within the floor screed.

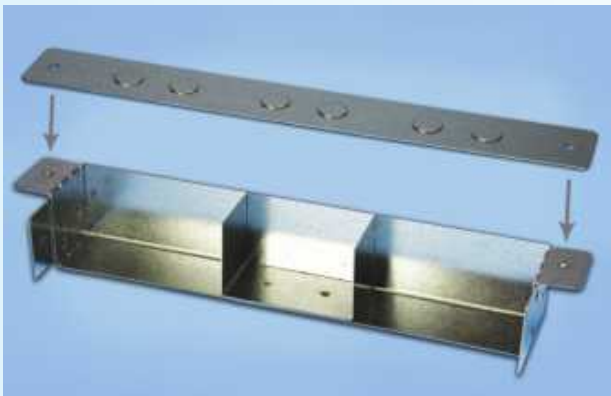
# FLUSH FLOOR OUTLET TRUNKING

## INTERSECTION (with flyover)



	No. of Compartments	
	3	4
PRODUCT CODE	AFFI336/3	AFFI336/4

## RISER BEND



	No. of Compartments	
	3	4
PRODUCT CODE	AFFSR336/3	AFFSR336/4

Specify size of standard trunking when ordering.

## END CAP

## LID COUPLER

## BODY COUPLER



END CAP	AFFEC336
LID COUPLER (PAIR)	AFFLC336
BODY COUPLER (PAIR)	AFFBC336

## INSTALLATION

### Floor Fixing

The trunking MUST be laid directly onto a fully supporting sub-screed. Failure to follow this instruction may lead to movement of the trunking within the floor screed. The trunking is fixed to the sub-screed through the holes provided in the side return.

### Location and Fixing of the Service Outlet Module

1. Determine the desired position of the module along the trunking run.
2. Remove the appropriate lid panel.
3. Remove the 500mm dividers located immediately below the lid panel.
4. Insert the service module.

### Selection of Accessories

The standard depth of this system is 60mm. This may impose restrictions on the selection of plugs and sockets so that the lid of the module can be securely closed in operation. With careful consideration and design most combinations of power, voice and data connections can be accommodated. You are strongly recommended to consult your Armorduct Sales Manager before specification of accessories.

The service outlet module is made up of two component parts.

- A section of trunking lid and the socket plate carrier.
- A carpet frame and lid.

### Trunking Lid and Socket Plate Carrier

A 500mm length of trunking lid into which a rectangular hole is punched to accept the moulded carpet frame. Attached to this section of lid is a galvanised metal frame which carries the socket plates.

This length of lid is interchangeable with the standard lengths used on the trunking.

### Carpet Frame and Lid

A carpet frame and hinged lid manufactured from ULTRAMID B3 - PA6 plastics that are Halogen free and conform to fire classification UL94 V2 (3.2mm). The lid which is reinforced by a 2.5mm steel plate has a carpet recess of 6mm and carries three individually hinged cable outlets and a moulded handle.

### Specifications

Trunking lid and socket carrier manufactured from 2.5mm and 1.2mm respectively, self-coloured pre-galvanised steel sheet to.

BS EN10142:1991.

Fe PO2G Z275NAC.

BS EN10143:1993.



PRODUCT CODE	No. of Compartments	
	3	4
	AFFOM/3	AFFOM/4

### Ordering Information

The three compartment module is supplied with the following as standard:

- One twin 13amp switched socket and plate No. AXP55/3
- One standard 4-way RJ45 plate No. AXPRJ45/3
- One blank plate No. AXPB/3

The four compartment model is supplied with one socket plate, two blanks and a choice of data plate.

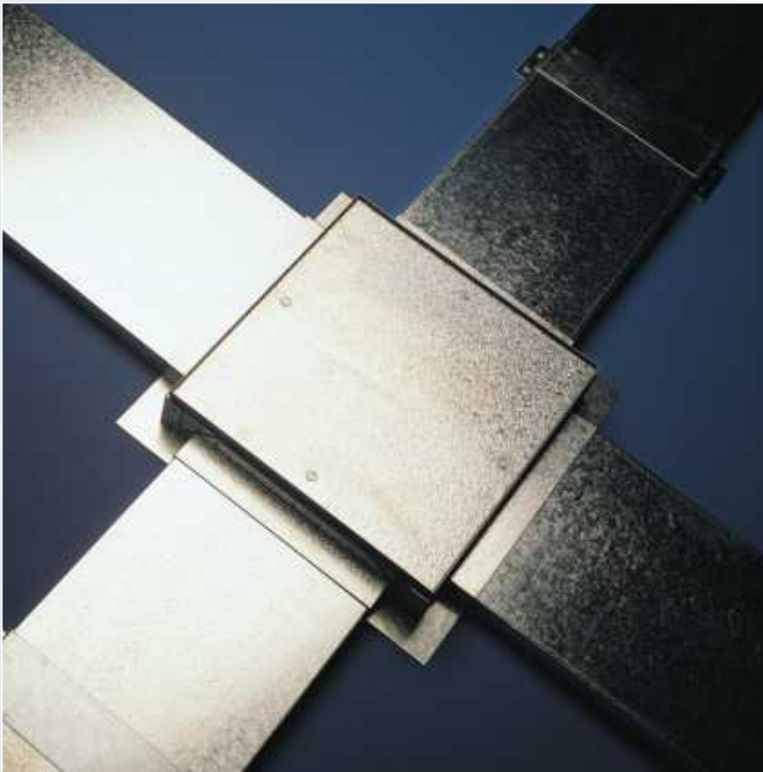
## NON STANDARD SERVICE OUTLET MODULES

Non-standard service outlet modules are available to order. Variations are available as follows:

<b>Compartments</b>	2 and 4 compartment.
<b>Finish</b>	Carpet frames can be manufactured in brass, stainless steel, or finished in chrome plate or in a wide range of powder coated colours.
<b>Application</b>	Modules can be manufactured to fit floors covered by carpet, vinyl, terrazzo, and other forms of ceramic floor tile.

If you have a non-standard requirement please contact the Armorduct sales office.

# UNDERSCREED TRUNKING

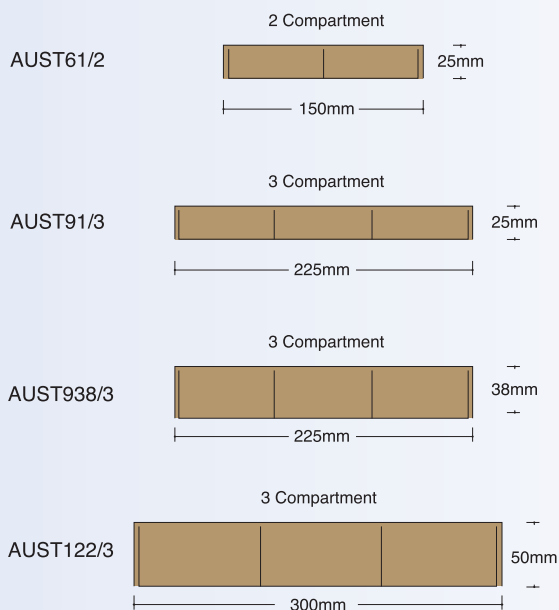


The Armorduct Underscreed trunking system has been designed for cable distribution in floors where the trunking is buried in the screed and the service outlet positions are fixed.

The Underscreed Service Outlet trunking system is made up of four parts:

- Totally enclosed trunking in a range of sizes and compartments with associated flat and riser bends.
- A junction/intersection box which can be used as a bend, tee and intersection as well as giving surface access to the buried system.
- A 3/4 compartment Service Outlet Module.
- A comprehensive range of socket plates for voice, data and power.

## UNDERSCREED TRUNKING PROFILES



### Specification

Self colour pre-galvanised steel sheet to:  
BS EN10142:1991  
Fe PO2G Z275NAC  
BS EN10143:1993

The trunking is manufactured from 1.1mm self-coloured pre-galvanised steel in standard lengths of 2 metres, complete with two saddle clamps per length.

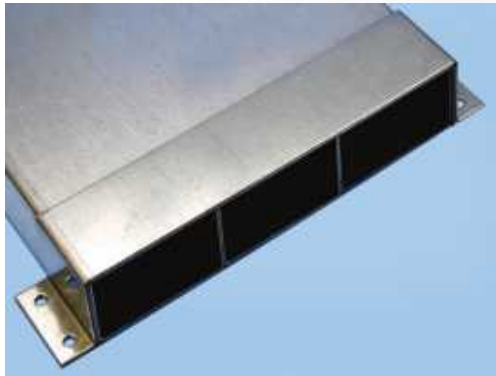
**A technical specification is available in PDF format on request.**

### Other Sizes of Trunking

The standard size range only is shown in the catalogue. However, underscreed trunking can be manufactured in a wide range of sizes to suit specific applications.

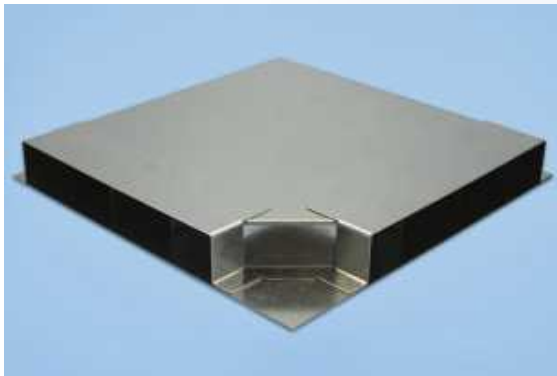
# UNDERSCREED TRUNKING

## TRUNKING



Size (mm)	No. of Compartments	
	2	3
150 x 25	AUST61/2	AUST61/3
225 x 25	AUST91/2	AUST91/3
225 x 38	AUST938/2	AUST938/3
300 x 50	AUST122/2	AUST122/3

## HORIZONTAL BEND



Size (mm)	No. of Compartments	
	2	3
150 x 25	AUSFB61/2	AUSFB61/3
225 x 25	AUSFB91/2	AUSFB91/3
225 x 38	AUSFB938/2	AUSFB938/3
300 x 50	AUSFB122/2	AUSFB122/3

## RISER BEND



Size (mm)	No. of Compartments	
	2	3
150 x 25	AUSRB61/2	AUSRB61/3
225 x 25	AUSRB91/2	AUSRB91/3
225 X 38	AUSRB938/2	AUSRB938/3
300 X 50	AUSRB122/2	AUSRB122/3

**Note:**

The depth of the floor screed & size of standard trunking MUST be specified

## END CAP



END CAP	
Size (mm)	2
150 x 25	AUSEC61
225 x 25	AUSEC91
225 X 38	AUSEC938
300 X 50	AUSEC122

## SADDLE CLAMP



SADDLE CLAMP	
Size (mm)	
150 x 25	AUSSC61
225 x 25	AUSSC91
225 X 38	AUSSC938
300 X 50	AUSSC122

# UNDERSCREED TRUNKING

## JUNCTION/INSPECTION BOX

### Description

The Junction Box connects the under-screed trunking to the surface of the screed. It cannot house sockets because of the internal flyover, and is primarily used as an access point for cabling particularly where the trunking run changes direction. The junction box consists of an outer box, an adjustable sliding tray, an internal flyover, painted grey and heavy duty lid.

In its standard form, the depth of the box can be adjusted from 63mm to 75mm.

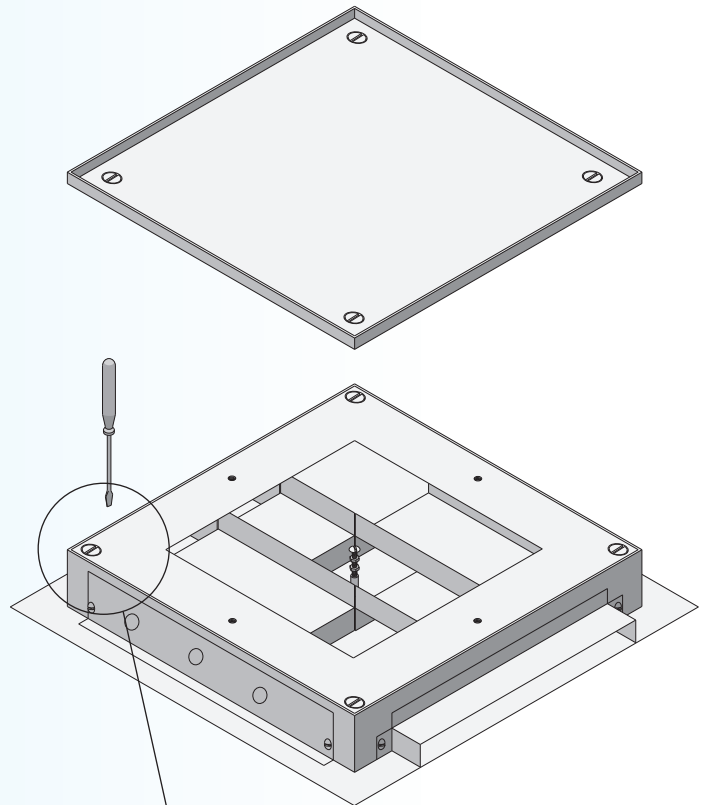
In its standard form the junction box is supplied for trunking entry. Side plates are also available for conduit entry or blanking off.

### Specification

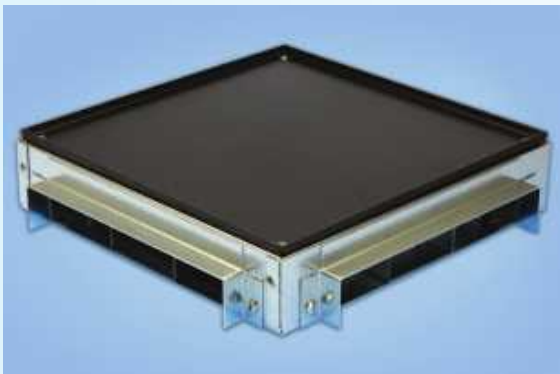
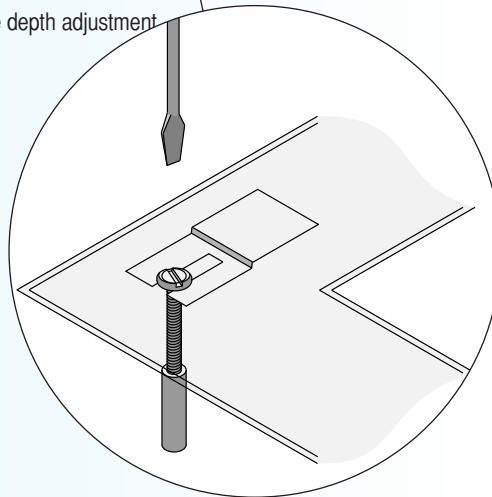
Self colour pre-galvanised steel sheet to:  
BS EN10142:1991 Fe PO2G Z275NAC  
BS EN10143:1993 Body and divider 1.2mm, Lid 2.5mm.

### Ordering Information

SIZE (mm)	150 X 25	225 X 25	225 X 38	300 X 50
Compartments	2	3	3	3
TERMINAL	AUSJE61/2	AUSJE91/3	AUSJE938/3	AUSJE122/3
THROUGH	AUSJT61/2	AUSJT91/3	AUSJT938/3	AUSJT122/3
TWOWAY	AUSJ261/2	AUSJ291/3	AUSJ2938/3	AUSJ2122/3
THREEWAY	AUSJ361/2	AUSJ391/3	AUSJ3938/3	AUSJ3122/3
FOURWAY	AUSJ461/2	AUSJ491/3	AUSJ4938/3	AUSJ4122/3



Simple depth adjustment



## BLANK SIDE PLATE    CONDUIT SIDE ENTRY PLATE    TRUNKING SIDE ENTRY PLATE



WIDTH (mm)	150 x 25	225 x 25	225 x 38	300 x 50
BLANK PLATE	AUSJB61	AUSJB91	AUSJB938	AUSJB122
CONDUIT ENTRY PLATE	AUSJC61	AUSJC91	AUSJC938	AUSJC122
TRUNKING ENTRY PLATE	AUSJT61	AUSJT91	AUSJT938	AUSJT122



The underscreed service outlet module consists of three elements:

- An outer box with a sliding tray which also carries the socket plates.
- A carpet frame.
- A lid with integral handle and cable outer flaps.

### The Outer Box

The outer box forms a metal sleeve which links the trunking to the surface of the floor screed. It is used to carry the inner tray and socket plates. In its standard form, the minimum depth of the box is 63mm, but this can be adjusted to a maximum of 75mm using captive adjusting screws. The outer box may be of the through or end type and can readily be converted to accept trunking or conduit by a selection of side plates, which are simply fixed by screws.

### Carpet Frame and Lid

The carpet frame and hinged lid are manufactured from ULTRAMID B3 - PA6 plastics that are Halogen free and conform to fire classification UL94 V2 (3.2mm).

The lid, which is reinforced by a 2.5mm steel plate has a carpet recess of 6mm and carries three individually hinged cable outlets and a moulded handle.

### Specifications

Base Box - 1.2mm Pre-Galvanised steel sheet to:

BS EN10142:1991. Fe PO2G Z275NAC. BS EN10143:1993.

Carpet Trim and Lid – ULTRAMID B3 - PA6 plastics.

### Dimensions

The overall dimensions of the outer box are:

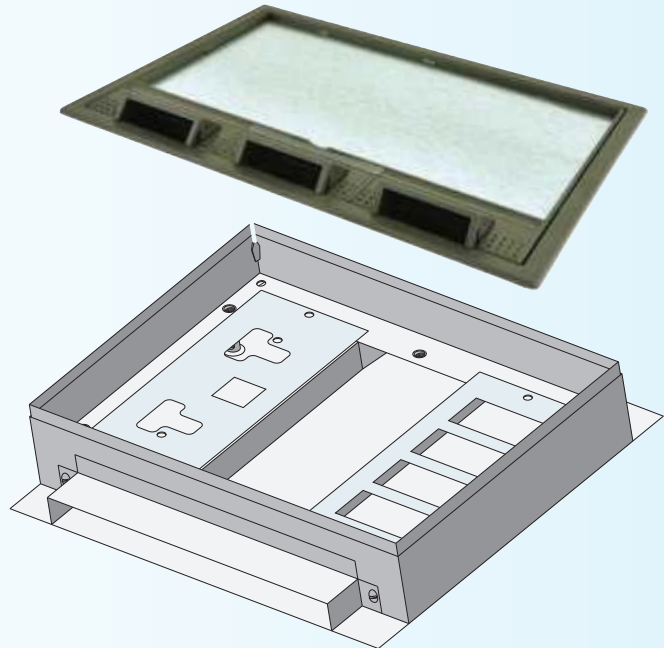
Width 225mm. Length 305mm. Depth adjustable 63mm to 75mm.

### Ordering Information

The three compartment module is supplied with the following plates as standard:

- One twin 13amp switched socket and plate No. AXPBE/3
- One standard 4-way RJ45 plate No. AXPRJ45/3
- One blank plate No. AXPB/3

The 2 compartment module is supplied as the 3 compartment with one compartment blanked off.



SIZE (mm)	150 X 25	225 X 25	225 X 38	300 X 50
<b>Compartments</b>	<b>2</b>	<b>3</b>	<b>3</b>	<b>3</b>
THROUGH TYPE	AUSOMT61/2	AUSOMT91/3	AUSOMT938/3	AUSOMT122/3
END TYPE	AUSOME61/2	AUSOME91/3	AUSOME938/3	AUSOME122/3

## INSTALLATION

### Screed Cover

It is recommended that the trunking should be covered by a minimum of 25mm of screed, to avoid the risk of subsequent cracking. Given that the minimum depth of the trunking is normally 25mm, it is recommended that Armorduct Underscreed Trunking should not be used in applications where the floor screed depth is less than 50mm.

### Screed Depth and Service Outlet Modules

The minimum recommended depth of screed to accommodate a service outlet module is 63mm.

# FLUSH FLOOR & CHEQUER PLATE TRUNKING



Earth links not supplied

## Other Sizes of Trunking

The standard size range only is shown in the catalogue. However, flush floor trunking can be manufactured in a wide range of sizes to suit specific applications.

The Armorduct Flush Floor and Chequer Plate Trunking Systems have been designed for the distribution of power, voice, and data cable, and heating and water piping in concrete floors.

The system consists of a range of flush floor trunking and accessories with a choice of plain flush, plain recessed and steel chequer plate lid.

The chequer plate version is particularly suitable for use in industrial environments, and for extra strength and where the width exceeds 150mm, the lid is supported at intervals along its length by a central column.

Recessed lid versions are designed to accommodate tiling with a depth of 3mm, but other recessed lid depths can be made to order.

Multi-compartment versions are also available. To order, suffix the trunking or accessory code with the number of compartments required, e.g. AFF92/3.

## Specification

### Body

1.25mm pre-galvanised steel to:

BS EN10142:1992

Fe PO2G Z275NAC

BS EN10143:1993

### Lid

Plain and plain recessed, 2.5mm pre-galvanised steel to:

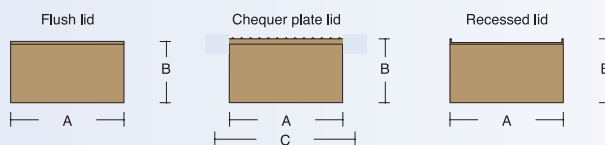
BS EN10142:1992

Fe PO2G Z275NAC

BS EN10143:1993

Chequer plate, 6mm painted black.

## FLUSH FLOOR & CHEQUER PLATE PROFILES



As Standard, Armorduct Flush Floor and Recessed Lid Trunking is provided with straight sides, as shown.

Chequer plate trunking is supplied with an straight sides, see diagram for details and sizes.

DIMENSIONS	A (mm)	B (mm)
Flush	Width	Depth
Recessed	Width	Depth

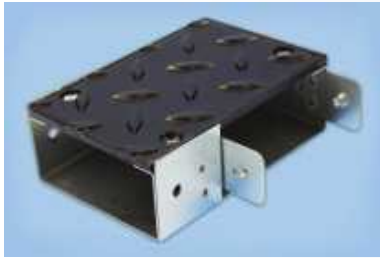
## TRUNKING



SIZE (mm)	COMP	FLUSH	RECESSED	CHEQUER
100 x 50	1	AFFL42	AFRL42	AFCP42
100 x 50	2	AFFL42/2	AFRL42/2	AFCP42/2
100 x 50	3	AFFL42/3	AFRL42/3	AFCP42/3
150 x 50	1	AFFL62	AFRL62	AFCP62
150 x 50	2	AFFL62/2	AFRL62/2	AFCP62/2
150 x 50	3	AFFL62/3	AFRL62/3	AFCP62/3
225 x 50	1	AFFL92	AFRL92	AFCP92
225 x 50	2	AFFL92/2	AFRL92/2	AFCP92/2
225 x 50	3	AFFL92/3	AFRL92/3	AFCP92/3

# FLUSH FLOOR & CHEQUER PLATE TRUNKING

## BEND



SIZE (mm)	COMP	FLUSH	RECESSED	CHEQUER
100 x 50	1	AFFLB42	AFRLB42	AFCPB42
100 x 50	2	AFFLB42/2	AFRLB42/2	AFCPB42/2
100 x 50	3	AFFLB42/3	AFRLB42/3	AFCPB42/3
150 x 50	1	AFFLB62	AFRLB62	AFCPB62
150 x 50	2	AFFLB62/2	AFRLB62/2	AFCPB62/2
150 x 50	3	AFFLB62/3	AFRLB62/3	AFCPB62/3
225 x 50	1	AFFLB92	AFRLB92	AFCPB92
225 x 50	2	AFFLB92/2	AFRLB92/2	AFCPB92/2
225 x 50	3	AFFLB92/3	AFRLB92/3	AFCPB92/3

## TEE



SIZE (mm)	COMP	FLUSH	RECESSED	CHEQUER
100 x 50	1	AFFLT42	AFRLT42	AFCPT42
100 x 50	2	AFFLT42/2	AFRLT42/2	AFCPT42/2
100 x 50	3	AFFLT42/3	AFRLT42/3	AFCPT42/3
150 x 50	1	AFFLT62	AFRLT62	AFCPT62
150 x 50	2	AFFLT62/2	AFRLT62/2	AFCPT62/2
150 x 50	3	AFFLT62/3	AFRLT62/3	AFCPT62/3
225 x 50	1	AFFLT92	AFRLT92	AFCPT92
225 x 50	2	AFFLT92/2	AFRLT92/2	AFCPT92/2
225 x 50	3	AFFLT92/3	AFRLT92/3	AFCPT92/3

## INTERSECTION



SIZE (mm)	COMP	FLUSH	RECESSED	CHEQUER
100 x 50	1	AFFLI42	AFRLI42	AFCPI42
100 x 50	2	AFFLI42/2	AFRLI42/2	AFCPI42/2
100 x 50	3	AFFLI42/3	AFRLI42/3	AFCPI42/3
150 x 50	1	AFFLI62	AFRLI62	AFCPI62
150 x 50	2	AFFLI62/2	AFRLI62/2	AFCPI62/2
150 x 50	3	AFFLI62/3	AFRLI62/3	AFCPI62/3
225 x 50	1	AFFLI92	AFRLI92	AFCPI92
225 x 50	2	AFFLI92/2	AFRLI92/2	AFCPI92/2
225 x 50	3	AFFLI92/3	AFRLI92/3	AFCPI92/3

## RISER BEND

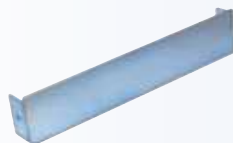


SIZE (mm)	COMP	FLUSH	RECESSED	CHEQUER
100 x 50	1	AFFLR42	AFRLR42	AFCPR42
100 x 50	2	AFFLR42/2	AFRLR42/2	AFCPR42/2
100 x 50	3	AFFLR42/3	AFRLR42/3	AFCPR42/3
150 x 50	1	AFFLR62	AFRLR62	AFCPR62
150 x 50	2	AFFLR62/2	AFRLR62/2	AFCPR62/2
150 x 50	3	AFFLR62/3	AFRLR62/3	AFCPR62/3
225 x 50	1	AFFLR92	AFRLR92	AFCPR92
225 x 50	2	AFFLR92/2	AFRLR92/2	AFCPR92/2
225 x 50	3	AFFLR92/3	AFRLR92/3	AFCPR92/3

## CONNECTORS



## END CAP



SIZE (mm)	CONNECTOR	END CAP
100 x 50	AFFC42	AFEC42
150 x 50	AFFC62	AFEC62
225 x 50	AFFC92	AFEC92

# SKIRTING TRUNKING



## Application

Surface distribution of and access to voice, data and power cabling in the same trunking body at skirting level.

The installation of skirting trunking does not require any modification of the building structure and it can be readily adapted on site to fit any shape of room. It is therefore very suitable for cable installation in refurbishment projects.

## Description

A comprehensive range of multi compartment steel trunking with a chamfered or square profile which is manufactured for installation at skirting height. It has been designed for strength, ease of installation and a final appearance that will enhance any commercial environment.

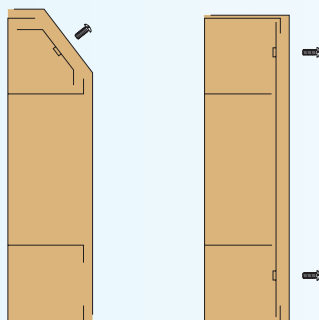
The lid which totally encloses the body is available in a number of different finishes. Where on-site coating is specified, the lid may be supplied in self-colour zintec - a surface that will readily accept any proprietary gloss paint.

For a high quality coloured finish, the lid may be supplied powder coated in a wide choice of colours. Powder coating offers an attractive finish which is also highly resistant to damage during installation and in subsequent use.

The lid may also be manufactured in stainless steel with a polished or satin finish.

## Accessories

In addition to the normal range of accessories, there are also accessories which link Armorduct Skirting to the Armorduct Dado, Flush Floor and Underscreed systems.



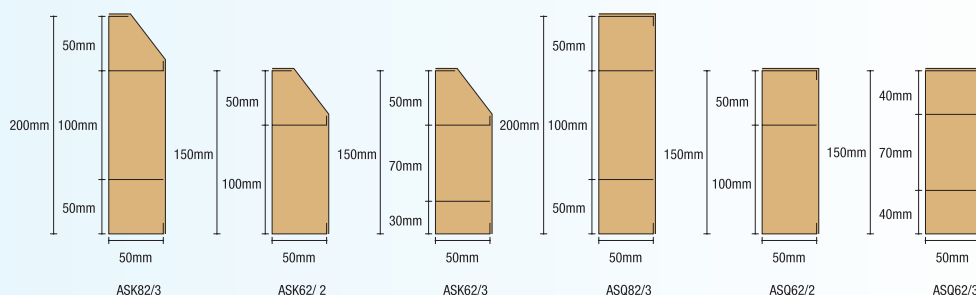
Detail of bridge fixing for chamfered and square sections

**A technical specification is available in PDF format on request.**

## Other Styles

Armorduct has the capacity and skills necessary to manufacture a wide range of different skirting sections and compartment configurations to meet specific customer requirements.

## SKIRTING TRUNKING PROFILES



## STANDARD SPECIFICATION

<b>Material</b>	<b>Body:</b> Hot dipped galvanised sheet steel to BS EN10142:1991; Fe PO2G Z275NAC; BS EN10143:1993 20 gauge (1.00mm).
	<b>Lid:</b> Electro coated steel: BS EN 10152:1994; DC01 ZE25/25AC; BS EN 10130:1991 18 gauge (1.2mm).
<b>Finish</b>	<b>Body:</b> Self colour galvanised sheet steel to FePO2G. Z275NAC. Complies with BS4678 Part 1 1978 - Class 3 Heavy Protection against Corrosion.
	<b>Lid:</b> Epoxy powder coat in white RAL 9003.

## ALTERNATIVE SPECIFICATIONS

<b>Length</b>	The body and lid can be manufactured in lengths up to 2 metres.
<b>Finish</b>	Lids may be epoxy powder coated in a wide range of colours.
<b>Material</b>	Lids can be manufactured in 1.2mm stainless steel to BS1449: Part 2:1983 Type 304, with mill finish 2A, bright, annealed or mill finish 2B, satin grained 180 to 220 grit size.

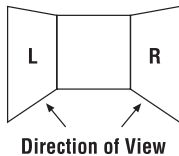
## ORDERING INFORMATION

The information listed is for the standard range of chamfered and square skirting sections. The trunking body is supplied in 2 metre lengths as standard complete with body coupler and fixing screws.

Accessory bodies are supplied with integral couplers and all necessary fixing screws.

Accessory Lids are supplied with two fixing bridges and all necessary 3.5mm screws.


Earth links are not included and should be ordered separately.



### Handed Accessories

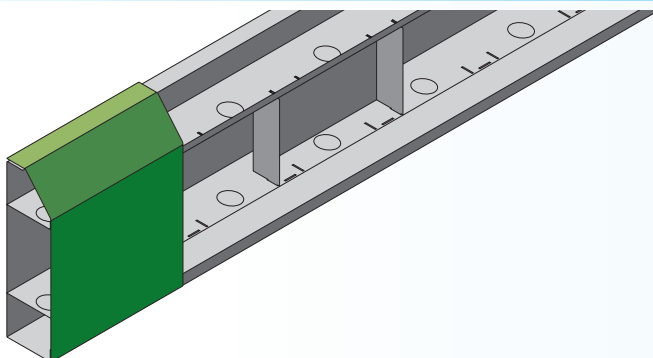
Some accessories are handed and it is very important to indicate the hand required when ordering. The convention used by Armorduct is illustrated on the left and can be described as follows:

**“When looking at the wall on which the accessory is to be mounted, is the position to the left or right hand of the trunking run”**

As a reminder the symbol  is shown against all handed accessories.

For illustration purposes only the chamfered section is shown.

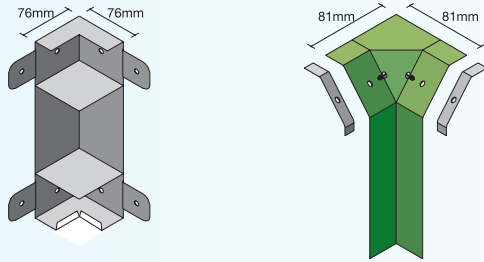
## SKIRTING TRUNKING



	150 x 50mm	150 x 50mm	200 x 50mm
No. of Compartments	2	3	3
Chamfered	ASK62/2	ASK62/3	ASK82/3
Square	ASQ62/2	ASQ62/3	ASQ82/3

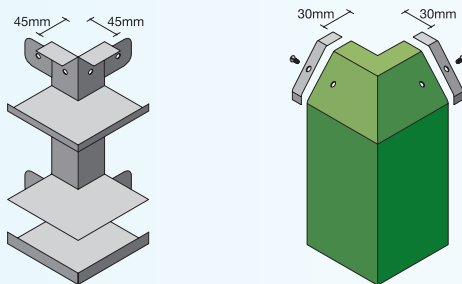
# SKIRTING TRUNKING

## INTERNAL BEND



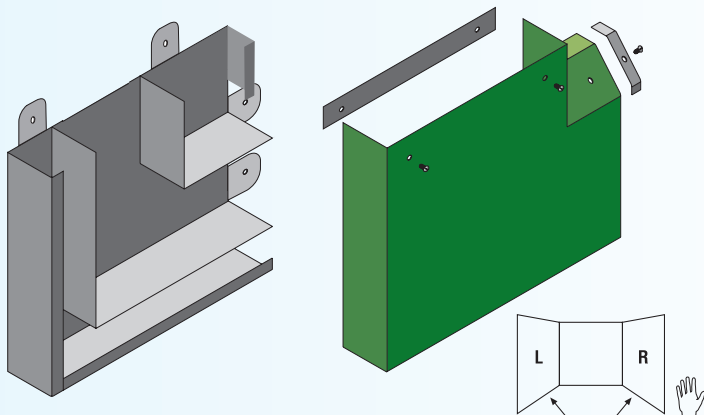
	150 x 50mm	150 x 50mm	200 x 50mm
No. of Compartments	2	3	3
Chamfered	ASKBI62/2	ASKBI62/3	ASKBI82/3
	150 x 50mm	150 x 50mm	200 x 50mm
No. of Compartments	2	3	3
Square	ASQBI62/2	ASQBI62/3	ASQBI82/3

## EXTERNAL BEND



	150 x 50mm	150 x 50mm	200 x 50mm
No. of Compartments	2	3	3
Chamfered	ASKBE62/2	ASKBE62/3	ASKBE82/3
	150 x 50mm	150 x 50mm	200 x 50mm
No. of Compartments	2	3	3
Square	ASQBE62/2	ASQBE62/3	ASQBE82/3

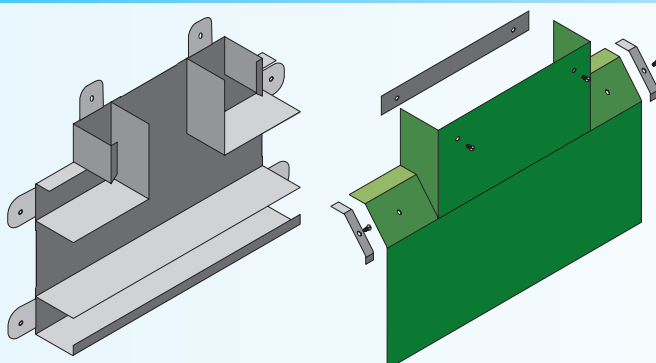
## FLAT BEND - Left and Right-handed



	150 x 50mm	150 x 50mm	200 x 50mm
No. of Compartments	2	3	3
Chamfered	ASKFB62/2	ASKFB62/3	ASKFB82/3
	150 x 50mm	150 x 50mm	200 x 50mm
No. of Compartments	2	3	3
Square	ASQFB62/2	ASQFB62/3	ASQFB82/3

For Left or Right Hand add suffix /LH or /RH

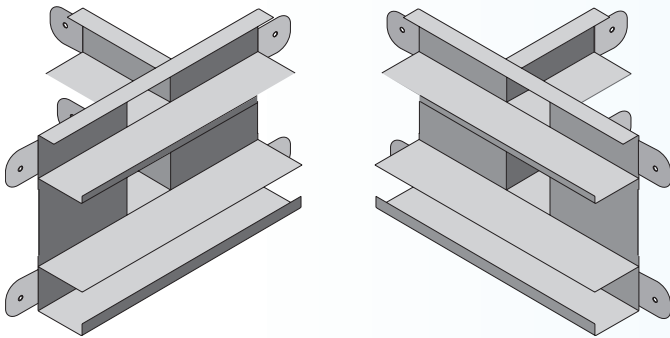
## FLAT TEE



	150 x 50mm	150 x 50mm	200 x 50mm
No. of Compartments	2	3	3
Chamfered	ASKFT62/2	ASKFT62/3	ASKFT82/3
	150 x 50mm	150 x 50mm	200 x 50mm
No. of Compartments	2	3	3
Square	ASQFT62/2	ASQFT62/3	ASQFT82/3

# SKIRTING TRUNKING

## BACK ENTRY TEE - Left and Right Handed

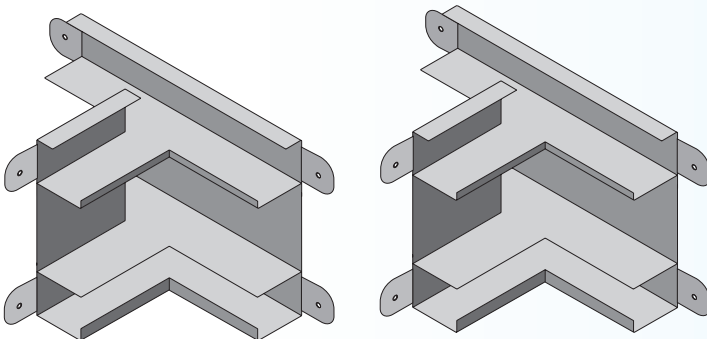


	150 x 50mm	150 x 50mm	200 x 50mm
No. of Compartments	2	3	3
Chamfered	ASKBT62/2	ASKBT62/3	ASKBT82/3
	150 x 50mm	150 x 50mm	200 x 50mm
No. of Compartments	2	3	3
Square	ASQBT62/2	ASQBT62/3	ASQBT82/3



For Left or Right Hand add suffix /LH or /RH

## CORNER TEE - Left and Right handed

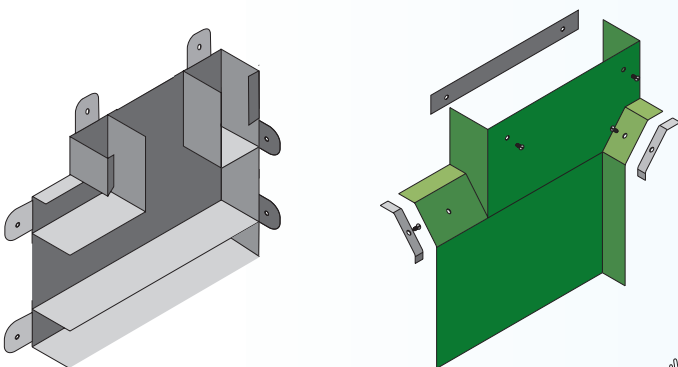


	150 x 50mm	150 x 50mm	200 x 50mm
No. of Compartments	2	3	3
Chamfered	ASKCT62/2	ASKCT62/3	ASKCT82/3
	150 x 50mm	150 x 50mm	200 x 50mm
No. of Compartments	2	3	3
Square	ASQCT62/2	ASQCT62/3	ASQCT82/3



For Left or Right Hand add suffix /LH or /RH

## RISING CORNER TEE



	150 x 50mm	150 x 50mm	200 x 50mm
No. of Compartments	2	3	3
Chamfered	ASKRCT62/2	ASKRCT62/3	ASKRCT82/3
	150 x 50mm	150 x 50mm	200 x 50mm
No. of Compartments	2	3	3
Square	ASQRCT62/2	ASQRCT62/3	ASQRCT82/3



For Left or Right Hand add suffix /LH or /RH

## END CAP - Left and Right handed



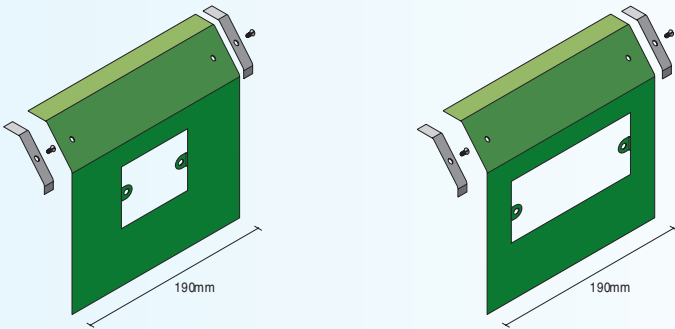
	150 x 50mm	150 x 50mm	200 x 50mm
No. of Compartments	2	3	3
Chamfered	ASKEC62/2	ASKEC62/3	ASKEC82/3
	150 x 50mm	150 x 50mm	200 x 50mm
No. of Compartments	2	3	3
Square	ASQEC62/2	ASQEC62/3	ASQEC82/3



For Left or Right Hand add suffix /LH or /RH

# SKIRTING TRUNKING

## SURFACE MOUNTED SOCKET PLATE



SINGLE PLATE	150 x 50mm	150 x 50mm	200 x 50mm
No. of Compartments	2	3	3
Chamfered	ASKSP62/2	ASKSP62/3	ASKSP82/3
Square	ASQSP62/2	ASQSP62/3	ASQSP82/3

TWIN PLATE	150 x 50mm	150 x 50mm	200 x 50mm
No. of Compartments	2	3	3
Chamfered	ASKTP62/2	ASKTP62/3	ASKTP82/3
Square	ASQTP62/2	ASQTP62/3	ASQTP82/3

## SEGREGATED BACK BOX

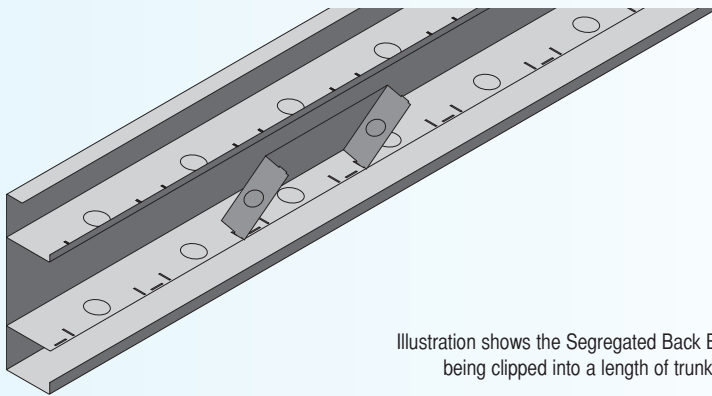


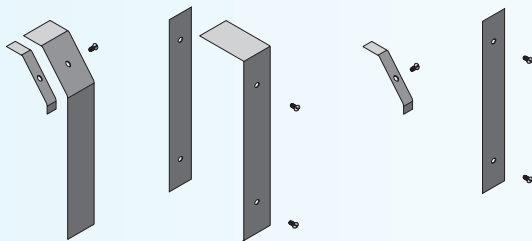
Illustration shows the Segregated Back Box being clipped into a length of trunking

	150 x 50mm	150 x 50mm	200 x 50mm
No. of Compartments	2	3	3
Chamfered	ASKSEG62/2	ASKSEG62/3	ASKSEG82/3

	150 x 50mm	150 x 50mm	200 x 50mm
No. of Compartments	2	3	3
Square	ASQSEG62/2	ASQSEG62/3	ASQSEG82/3

## LID FIXING STRAP AND BRIDGE

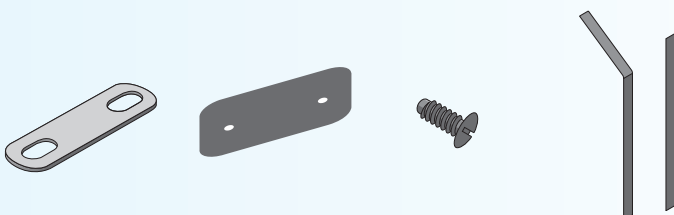
## BRIDGE AND SCREW ONLY



Lid Fixing Strap & Bridge	150 x 50mm	150 x 50mm	200 x 50mm
No. of Compartments	2	3	3
Chamfered	ASKLF62/2	ASKLF62/3	ASKLF82/3
Square	ASQLF62/2	ASQLF62/3	ASQLF82/3

Fixing Bridge & Screw	150 x 50mm	150 x 50mm	200 x 50mm
No. of Compartments	2	3	3
Chamfered	ASKFB62	ASKFB62	ASKFB82
Square	ASQFB62	ASQFB62	ASQFB82

## EARTH LINK BODY COUPLER M3.5 SCREW CABLE RETAINER



	Earth Link	Body Coupler	3.5mm Screw
Order Code	AEL	ASKSC	M3.5

Cable Retainer	150 x 50mm	150 x 50mm	200 x 50mm
No. of Compartments	2	3	3
Chamfered	ASKCR62	ASKCR62	ASKCR82
Square	ASQCR62	ASQCR62	ASQCR82

NB: Not to Scale



## DESCRIPTION



### Application

Surface distribution of and access to voice, data and power cabling in the same trunking body at dado level.

The installation of dado trunking does not require any modification of a building's structure and it can be readily adapted on site to fit any shape of room. It is therefore very suitable for cable installation in refurbishment projects.

### Description

A comprehensive range of multi compartment steel trunking with a chamfered or square profile which is manufactured for installation at dado height. It has been designed for strength, ease of installation and a final appearance that will enhance any commercial environment.

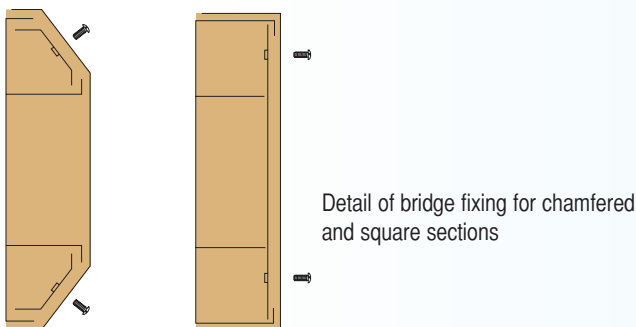
The lid which totally encloses the body is available in a number of different finishes. Where on-site coating is specified, the lid may be supplied in self-colour zintec - a surface that will readily accept any proprietary gloss paint.

For a high quality coloured finish, the lid may be supplied powder coated in a wide choice of colours. Powder coating offers an attractive finish which is also highly resistant to damage during installation and in subsequent use.

The Lid may also be manufactured in stainless steel with a polished or satin finish.

### Accessories

In addition to the normal range of accessories, there are also accessories which link Armorduct Dado to the Armorduct Skirting systems.

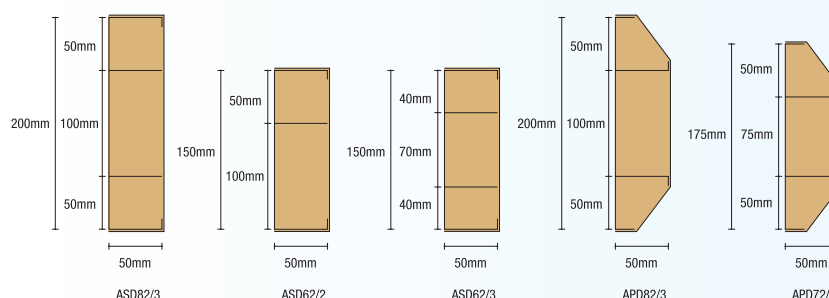


Detail of bridge fixing for chamfered and square sections

### Other Styles

Armorduct has the capacity and skills necessary to manufacture a wide range of different dado sections and compartment configurations to meet specific customer requirements.

## DADO TRUNKING PROFILES



# DADO TRUNKING

## STANDARD SPECIFICATION

<b>Material</b>	<b>Body:</b>	Hot dipped galvanised sheet steel to BS EN10142:1991; Fe PO2G Z275NAC; BS EN10143:1993 20 gauge (1.00mm).
	<b>Lid:</b>	Electro coated steel: BS EN 10152:1994; DC01 ZE25/25AC; BS EN 10130:1991 18 gauge (1.2mm).
<b>Finish</b>	<b>Body:</b>	Self colour galvanised sheet steel to FePO2G. Z275NAC. Complies with BS4678 Part 1 1978 - Class 3 Heavy Protection against Corrosion.
	<b>Lid:</b>	Epoxy powder coat in white RAL 9003.

## ALTERNATIVE SPECIFICATIONS

<b>Length</b>	The body and lid is manufactured in lengths of 2 metres.
<b>Finish</b>	Lids may be epoxy powder coated in a wide range of colours.
<b>Material</b>	Lids can be manufactured in 1.2mm stainless steel to BS1449: Part 2:1983 Type 304, with mill finish 2A, bright, annealed or mill finish 2B, satin grained 180 to 220 grit size.

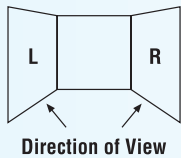
## ORDERING INFORMATION

The information listed is for the standard range of chamfered and square dado sections. The trunking body is supplied in 2 metre lengths as standard complete with body coupler and fixing screws.

Accessory bodies are supplied with integral couplers and all necessary fixing screws.

Accessory Lids are supplied with two fixing bridges and all necessary 3.5mm screws.


Earth links are not included and should be ordered separately.



### Handed Accessories

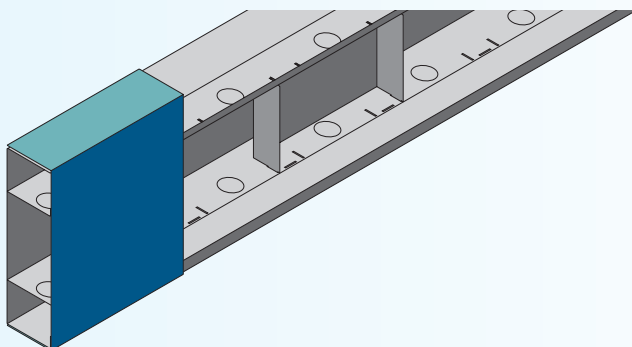
Some accessories are handed and it is very important to indicate the hand required when ordering. The convention used by Armorduct is illustrated on the left and can be described as follows:

**“When looking at the wall on which the accessory is to be mounted, is the position to the left or right hand of the trunking run”**

As a reminder the symbol  is shown against all handed accessories.

For illustration purposes only the square section is shown.

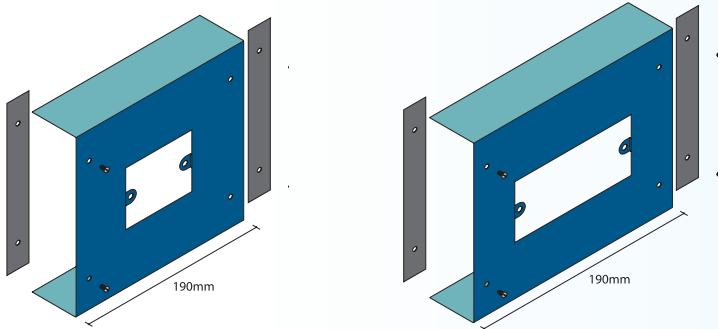
## DADO TRUNKING PROFILES



	150 x 50mm	150 x 50mm	200 x 50mm
No. of Compartments	2	3	3
Square	ASD62/2	ASD62/3	ASD82/3
	150 x 50mm	175 x 50mm	200 x 50mm
No. of Compartments	2	3	3
Chamfered	N/A	APD72/3	APD82/3

# DADO TRUNKING

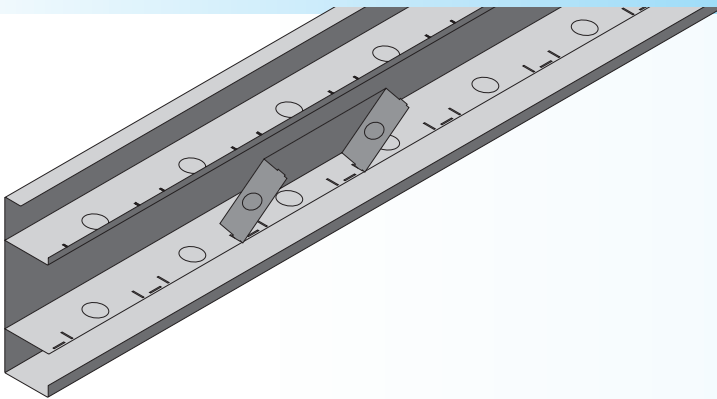
## SURFACE MOUNTED SOCKET PLATE



<b>SINGLE PLATE</b>	<b>150 x 50mm</b>	<b>175 x 50mm</b>	<b>200 x 50mm</b>
No. of Compartments	2	3	3
Square	ASDSP62/2	N/A	ASDSP82/3
Chamfered	N/A	APDSP72/3	APDSP82/3

<b>TWIN PLATE</b>	<b>150 x 50mm</b>	<b>175 x 50mm</b>	<b>200 x 50mm</b>
No. of Compartments	2	3	3
Square	ASDTP62/2	ASDTP62/3	ASDTP82/3
Chamfered	N/A	APDTP72/3	APDTP82/3

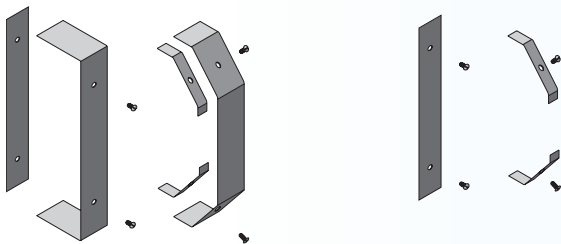
## SEGREGATION BACK BOX



	<b>150 x 50mm</b>	<b>175 x 50mm</b>	<b>200 x 50mm</b>
No. of Compartments	2	3	3
Square	ASDSEG62/2	N/A	ASDSEG82/3

	<b>150 x 50mm</b>	<b>150 x 50mm</b>	<b>200 x 50mm</b>
No. of Compartments	2	3	3
Chamfered	N/A	APDSEG72/3	APDSEG82/3

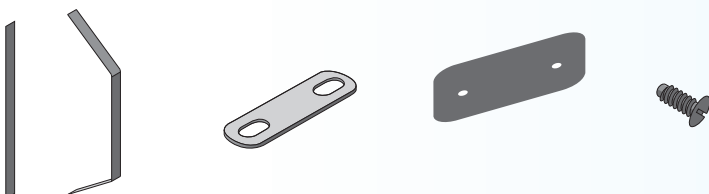
## LID FIXING STRAP AND BRIDGE BRIDGE AND SCREW ONLY



<b>Lid Fixing Strap &amp; Bridge</b>	<b>150 x 50mm</b>	<b>150 x 50mm</b>	<b>200 x 50mm</b>
No. of Compartments	2	3	3
Square	ASDLF62/2	ASDLF62/3	ASDLF82/3
<b>Fixing Bridge &amp; Screw (pr)</b>	ASDFB62	ASDFB62	ASDFB82

<b>Lid Fixing Strap &amp; Bridge</b>		<b>175 x 50mm</b>	<b>200 x 50mm</b>
No. of Compartments	N/A	3	3
Chamfered	N/A	APDLF72/3	APDLF82/3
<b>Fixing Bridge &amp; Screw</b>	N/A	APDFB72	APDFB82

## CABLE RETAINER EARTH LINK BODY COUPLER M3.5 SCREW



<b>SQUARE</b>	<b>150 x 50mm</b>	<b>150 x 50mm</b>	<b>200 x 50mm</b>
No. of Compartments	2	3	3
Cable Retainer	ASDCR62	ASDCR62	ASDCR82

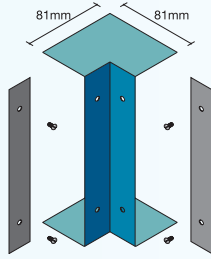
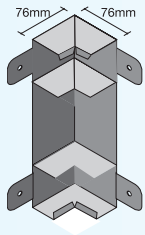
<b>CHAMFERED</b>		<b>175 x 50mm</b>	<b>200 x 50mm</b>
No. of Compartments	N/A	3	3
Cable Retainer	N/A	APDCR72	APDCR82

	<b>Earth Link</b>	<b>Body Coupler</b>	<b>3.5mm Screw</b>
Order Code	EL	ASKSC	M3.5

NB: Not to Scale

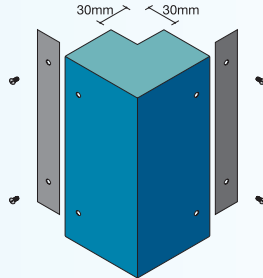
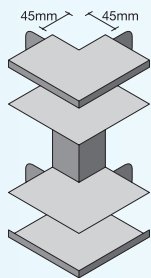
# DADO TRUNKING

## INTERNAL BEND



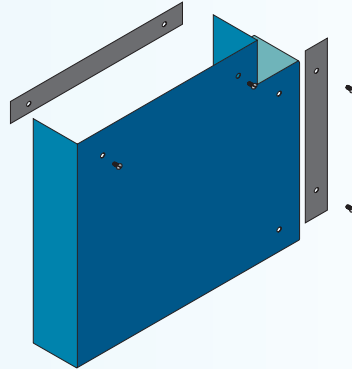
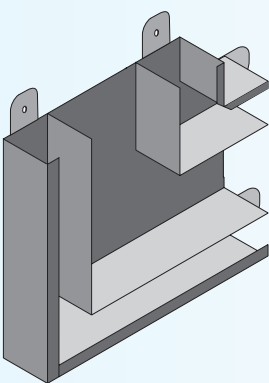
	150 x 50mm	150 x 50mm	200 x 50mm
No. of Compartments	2	3	3
Square	ASDBI62/2	ASDBI62/3	ASDBI82/3
	150 x 50mm	175 x 50mm	200 x 50mm
No. of Compartments	2	3	3
Chamfered	N/A	APDBI72/3	APDBI82/3

## EXTERNAL BEND



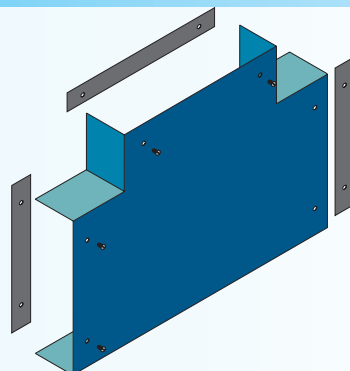
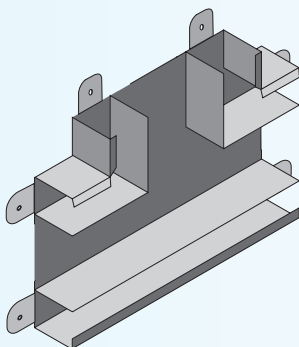
	150 x 50mm	150 x 50mm	200 x 50mm
No. of Compartments	2	3	3
Square	ASDBE62/2	ASDBE62/3	ASDBE82/3
	150 x 50mm	175 x 50mm	200 x 50mm
No. of Compartments	2	3	3
Chamfered	N/A	APDBE72/3	APDBE82/3

## FLAT BEND - Left or Right Handed



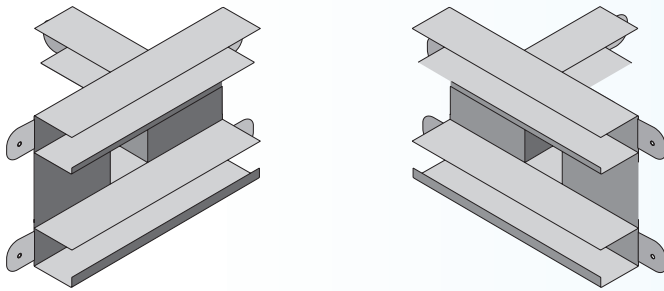
	150 x 50mm	150 x 50mm	200 x 50mm
No. of Compartments	2	3	3
Square	ASDFB62/2	ASDFB62/3	ASDFB82/3
	150 x 50mm	175 x 50mm	200 x 50mm
No. of Compartments	2	3	3
Chamfered	N/A	APDFB72/3	APDFB82/3

## FLAT TEE



	150 x 50mm	150 x 50mm	200 x 50mm
No. of Compartments	2	3	3
Square	ASDFT62/2	ASDFT62/3	ASDFT82/3
	150 x 50mm	175 x 50mm	200 x 50mm
No. of Compartments	2	3	3
Chamfered	N/A	APDFT72/3	APDFT82/3

## BACK ENTRY TEE - Left or Right Handed



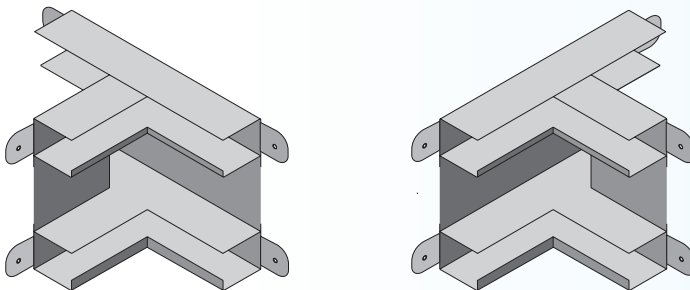
	150 x 50mm	150 x 50mm	200 x 50mm
No. of Compartments	2	3	3
Square	ASDBT62/2	ASDBT62/3	ASDBT82/3

	150 x 50mm	175 x 50mm	200 x 50mm
No. of Compartments	2	3	3
Chamfered	N/A	APDBT72/3	APDBT82/3



For Left or Right Hand add suffix /LH or /RH

## CORNER TEE - Left or Right Handed



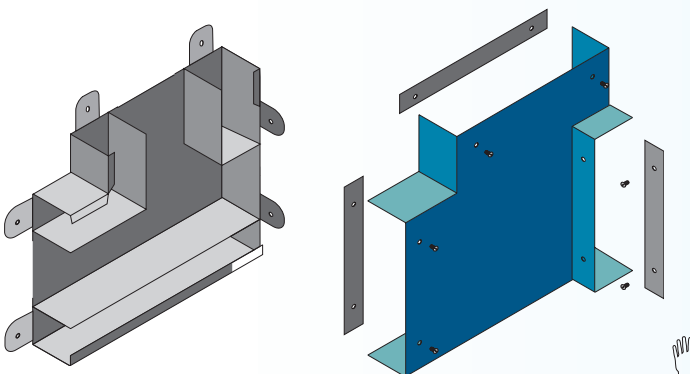
	150 x 50mm	150 x 50mm	200 x 50mm
No. of Compartments	2	3	3
Square	ASDCT62/2	ASDCT62/3	ASDCT82/3

	150 x 50mm	175 x 50mm	200 x 50mm
No. of Compartments	2	3	3
Chamfered	N/A	APDCT72/3	APDCT82/3



For Left or Right Hand add suffix /LH or /RH

## RISING CORNER TEE



	150 x 50mm	150 x 50mm	200 x 50mm
No. of Compartments	2	3	3
Square	ASDRCT62/2	ASDRCT62/3	ASDRCT82/3

	150 x 50mm	175 x 50mm	200 x 50mm
No. of Compartments	2	3	3
Chamfered	N/A	APDRCT72/3	APDRCT82/3



For Left or Right Hand add suffix /LH or /RH

## END CAP - Left or Right Handed



	150 x 50mm	150 x 50mm	200 x 50mm
No. of Compartments	2	3	3
Square	ASDEC62/2	ASDEC62/3	ASDEC82/3

	150 x 50mm	175 x 50mm	200 x 50mm
No. of Compartments	2	3	3
Chamfered	N/A	APDEC72/3	APDEC82/3

# manufacturing the difference



Armorduct Systems Ltd  
Building 9 The Pensnett Estate Kingswinford West Midlands DY6 7TG

**Tel: +44 (0)1384 233445 Fax: +44 (0)1384 231311**

Email: [sales@armorductsystems.co.uk](mailto:sales@armorductsystems.co.uk) Website: [www.armorductsystems.co.uk](http://www.armorductsystems.co.uk)

The information contained in this catalogue has been carefully compiled but we do not accept any responsibility for loss caused by any error contained herein. We reserve the right to alter prices without prior notice